

Woodborough Parish Council meeting

Environment Agency Flood Risk Update

6th July 2021

Contents

- Work we are undertaking
- Flood alleviation scheme update
 - Initial assessment
 - Background
 - Study area
 - Original wetlands scheme
 - Potential scheme
 - Conclusion
- Next steps

Work we are undertaking – flood warning

- New level gauge being installed as part of the Flood Warning Expansion Project – this will be installed by October 2021
- We aim to have a flood warning service live for the community between November 2021 & February 2022*
- In addition to the community receiving a new Flood Warning service, the Flood Alert you currently receive will be more tailored to your community.
- We will fully engage with the community about the details of this new warning service closer to the time of the new service being launched.

Work we are undertaking – flood wardens

- 23 Voluntary Community Flood Wardens
- 9 of the Woodborough Wardens attended the latest suite of training in the spring which covered the basics of being a Flood Warden.
- We are working with Communities Prepared to offer a repeat of this training in Autumn/Winter 2021 for those that couldn't make the last suite.
- Flood Warden Signage Scheme, so the Flood Wardens have the ability to close off roads when needed.

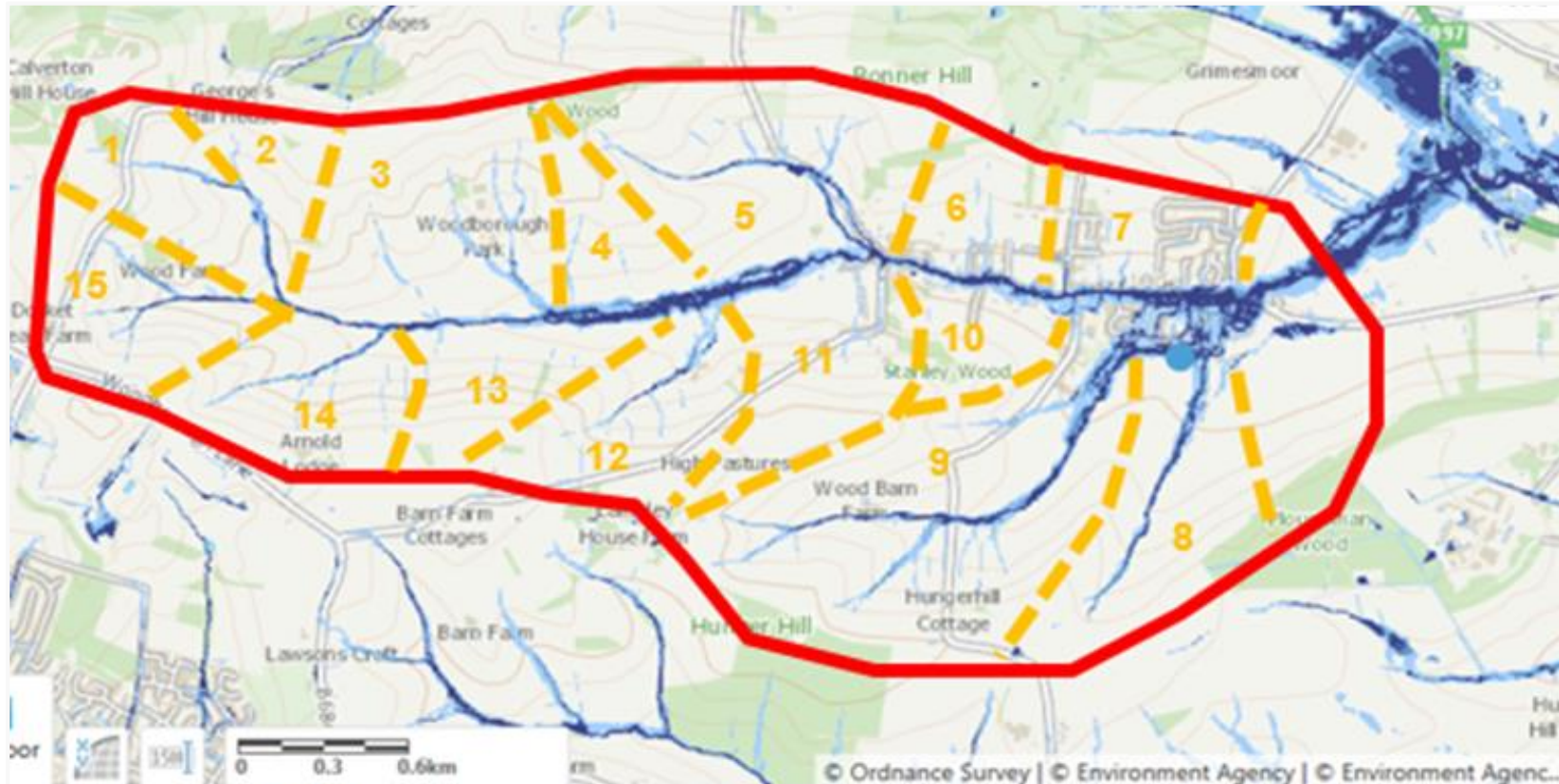
Flood alleviation scheme - Initial assessment

- Funding in 20/21 enabled the EA to undertake an Initial Assessment (IA) for Woodborough
- This re-evaluated the original Wetland Scheme and considered all potential alternative flood mitigation measures
- The findings of the IA are summarised in this presentation

Background

- The village of Woodborough has flooded a number of times in recent years. One of the main sources of the flood risk are the watercourses that flow through the village
 - Woodborough Brook flows from west to east through Woodborough and drains into the Dover Beck to the east of the village
 - There is a another watercourse that flows south to north and joins the Woodborough Brook in the centre of the village
- Woodborough Brook was historically been culverted and artificially straightened throughout parts of the village
- To mitigate the fluvial flood risk, a flood alleviation scheme (Woodborough Wetland scheme) has been considered in the past, but was unable to progress due to the significant need for partnership funding

Study area



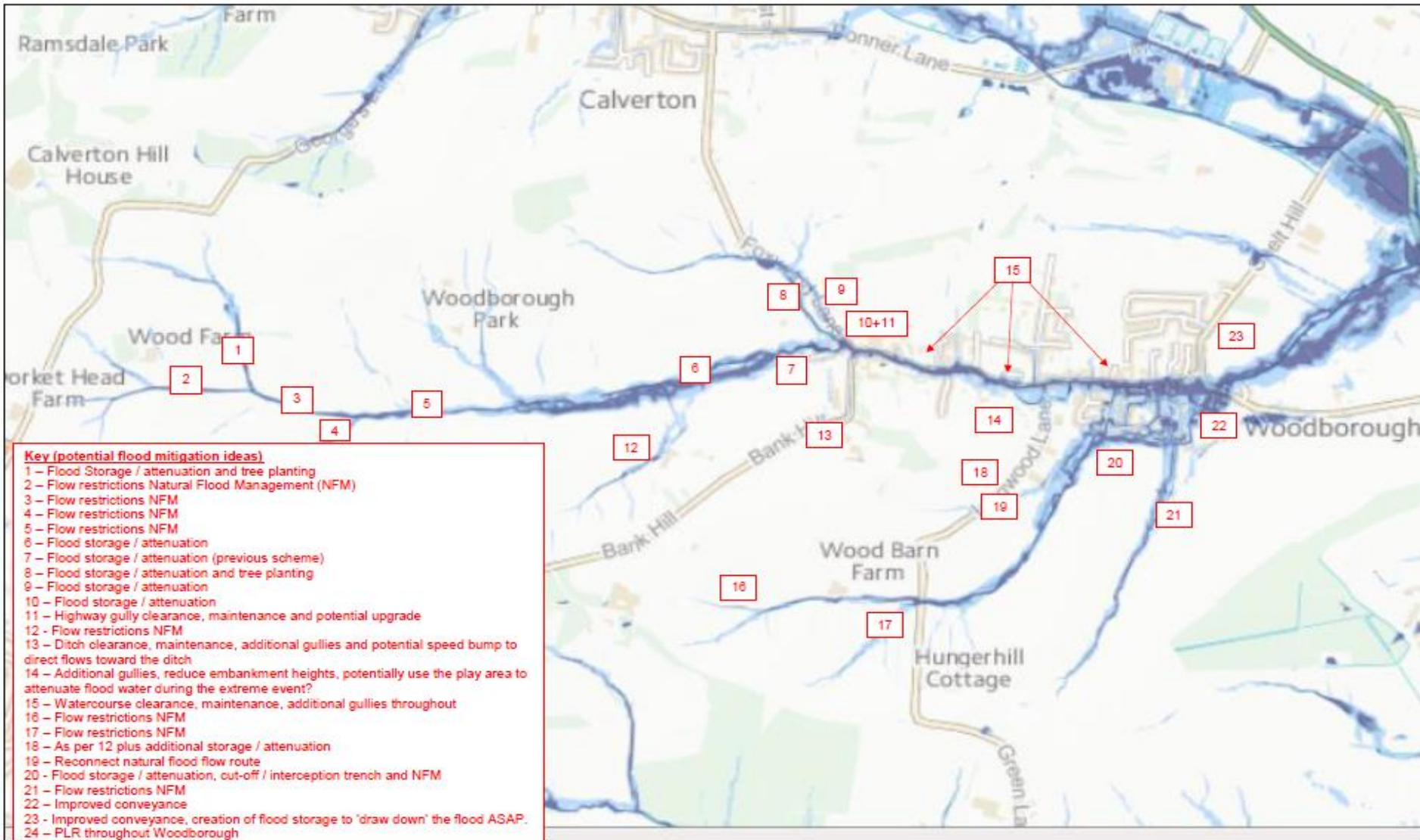
Woodborough Brook catchment (red), sub-catchments (orange) and the surface water flood extents are shown in shades of blue.

Potential options

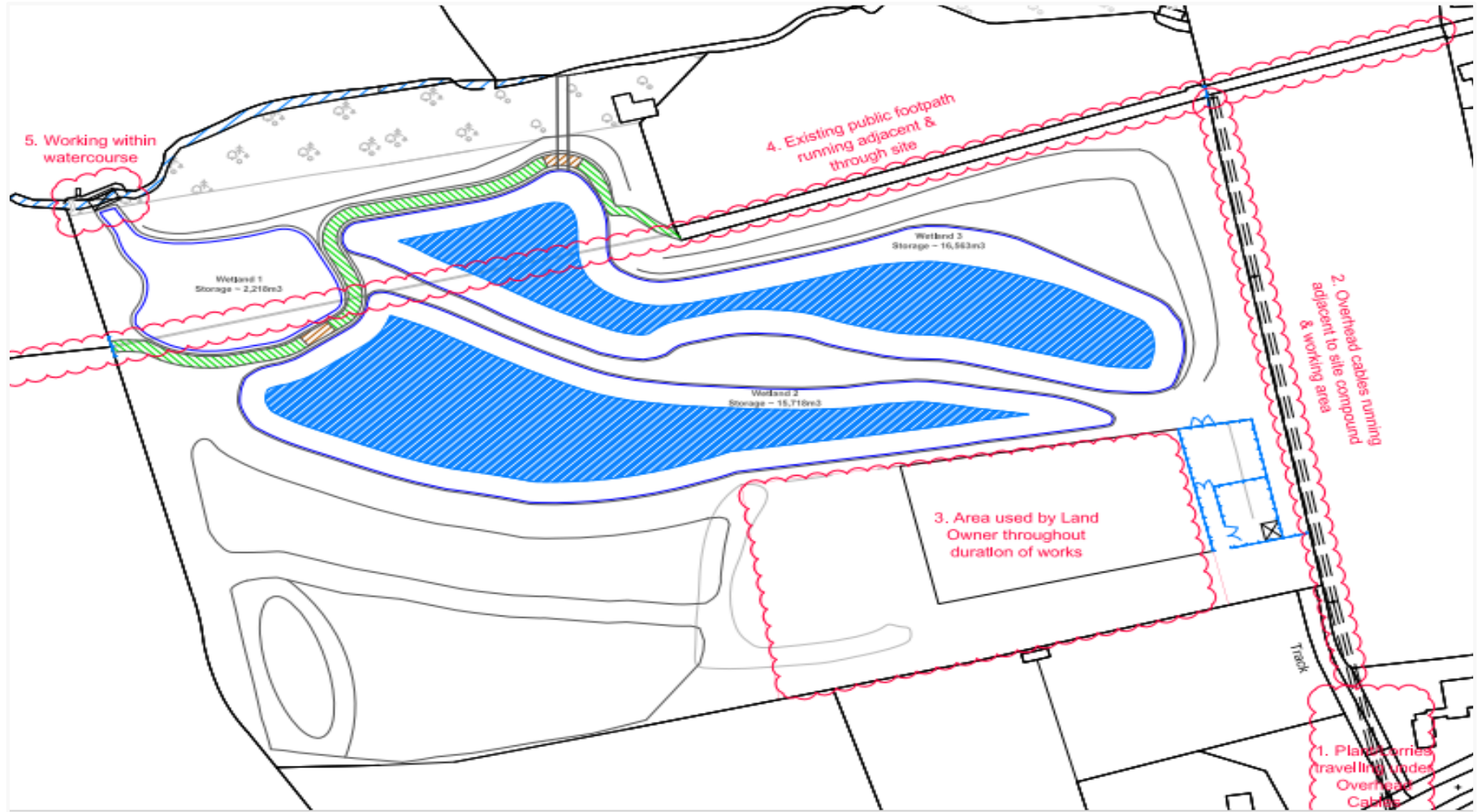
- The initial assessment identified 2 distinct flood risks which impact Woodborough:
 1. Fluvial flooding from Woodborough Brook
 2. Pluvial flooding from the south
- To mitigate this risk, the IA identified a range of potential interventions
- These measures have not been assessed for their effectiveness at this stage.

Potential options

Figure 1 – Potential flood ideas discussed during the site walkovers (surface water flood map)



Original Wetlands Scheme



Next steps

1. Install new level gauge installed as part of the Flood Warning Expansion Project (by October 2021)
2. Provide a flood warning service live for the community between November 2021 & February 2022
3. Further investigation to ascertain the optimum economic and environmental solution for Woodborough
4. Explore natural flood management opportunities in the catchment
 - Identify potential catchment wide locations for NFM.
 - Assess whether the percentage reduction in flow achievable?
 - Once complete, share NFM opportunity mapping outputs with the PC and partners.



Any questions?