

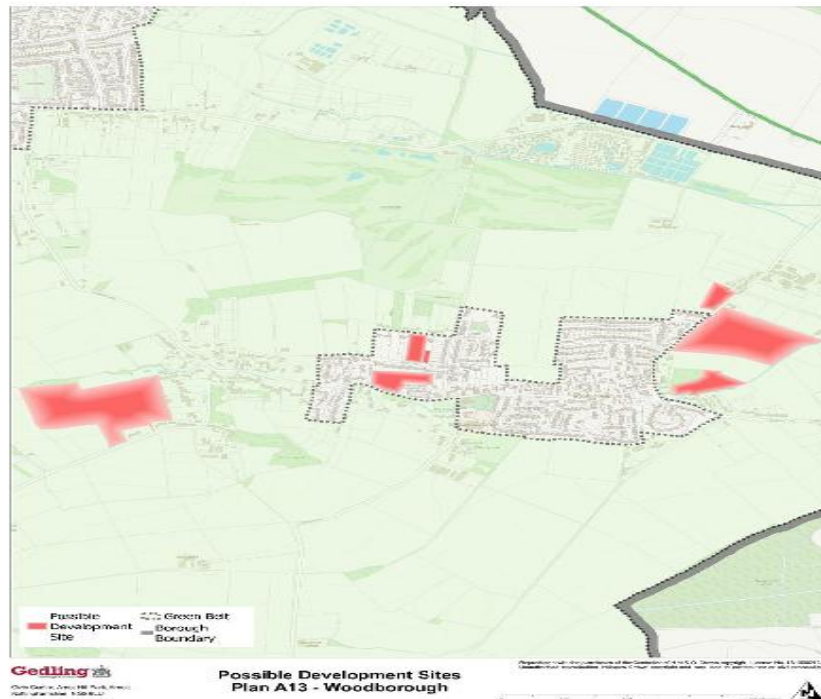
Local Development Plan Consultation

Where do I start? A simple two page suggested guide

Although Gedling Borough Council ask you to respond on their [form](#) and quote their question numbers, you can write an old fashioned letter or an e-mail (planningpolicy@gedling.gov.uk) laid out as you wish. Just be sure to include your contact details [name, address, telephone number, e-mail address if you have one]

You might wish to address the following issues:

- What do you think about new housing being built in Woodborough?
- Gedling talk about “small scale development” – what type of development would you find acceptable?
- Do you have any views on why the sites identified in red on the map might be suitable or unsuitable for housing?
- Of the areas marked on the map, which if any, do you think would be the best place for new housing?
- What types of housing does Woodborough need (town houses, bungalows, apartments etc)?
- If you object to development of some or all of these sites you may wish to use the following reasons:
 - Flooding
 - Village infrastructure (see list of items on p2)



Infrastructure Considerations

- Transport infrastructure (including footpaths, bridleways, cycleways and roads)
- Drainage and flood protection
- Public transport (including services and facilities)
- Travel behavioural change measures (including travel plans, marketing and promotion)
- Affordable housing
- Supported housing
- Education (including early years provision and community education)
- Community facilities (including libraries, youth activities and meeting venues)
- Cultural facilities
- Health and social care facilities
- Emergency services (police/crime reduction measures, fire and ambulance services)
- Environmental improvements
- Waste recycling facilities
- Shopping facilities
- Information and communication technology
- Training and employment measures for local people