



Woodborough Parish Council Public Meeting 6th August 2025

Gedling Borough Council
Local Development Plan

Agenda

- Introductions
- Timeline for the Consultation
- Cllr Helen Greensmith – Gedling Borough Councillor
- Implications for Woodborough
- Amanda Mellor – Flood Action Group
- Opportunity for residents to speak
- Next Steps

Meeting Protocol

- Listen to what others have to say
- Take turns to speak
- Accept that others may have different views
- Keep comments respectful
- Be concise
- Meeting will aim to close at 8.30pm

It's important that we come together on this matter

Timeline

- Launched 21st July 2025
- Closes 1st September 2025
- WPC made aware that sites were under consideration at the beginning of July
- Development Plan seen on 21st July when released to the public
- Arranged leaflets and further meetings to raise awareness

**GEDLING LOCAL
DEVELOPMENT PLAN**

**ISSUES AND OPTIONS
DOCUMENT**

July 2025

Serving people, Improving lives





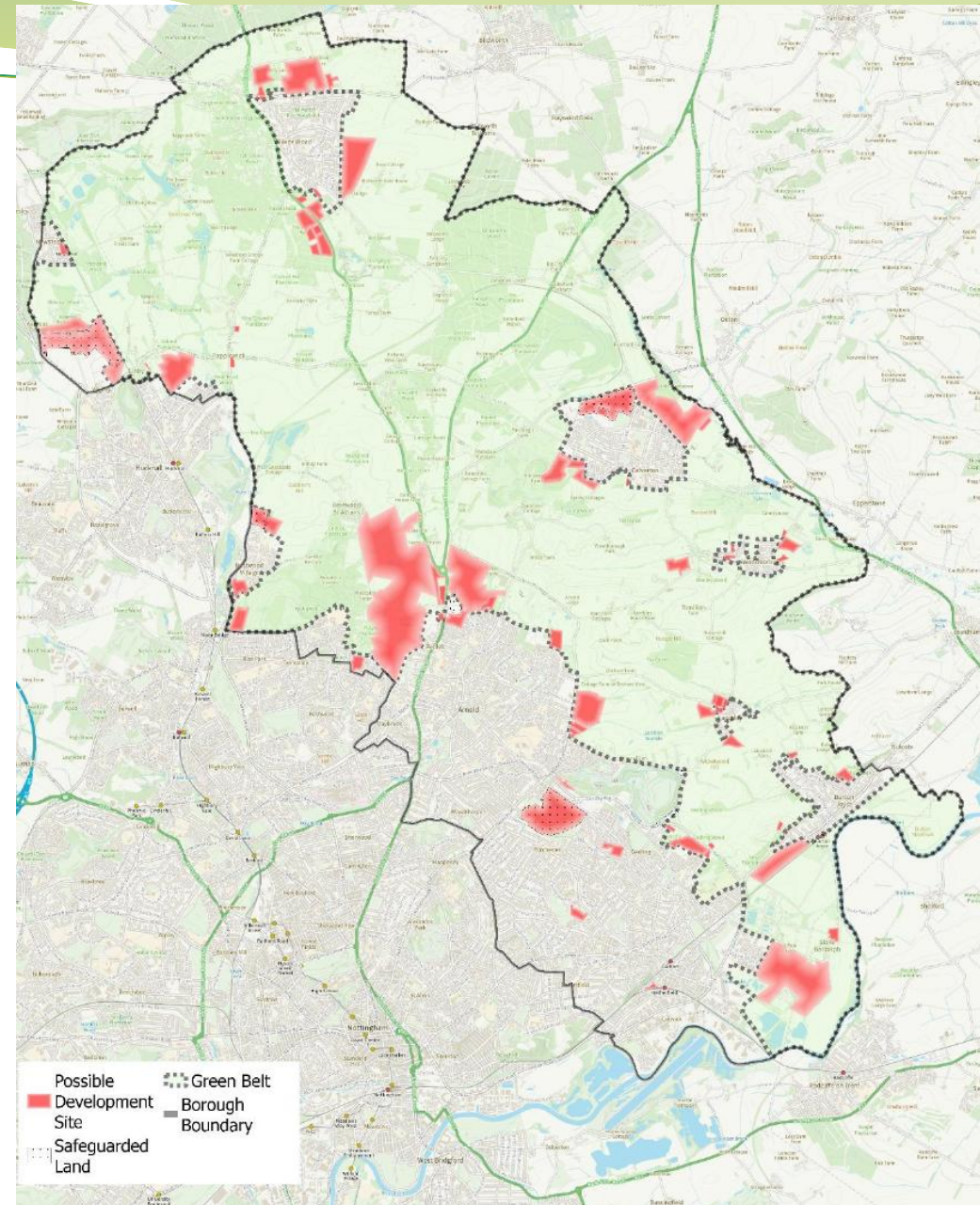
Helen Greensmith

Gedling Borough Councillor for
Woodborough & Lambley

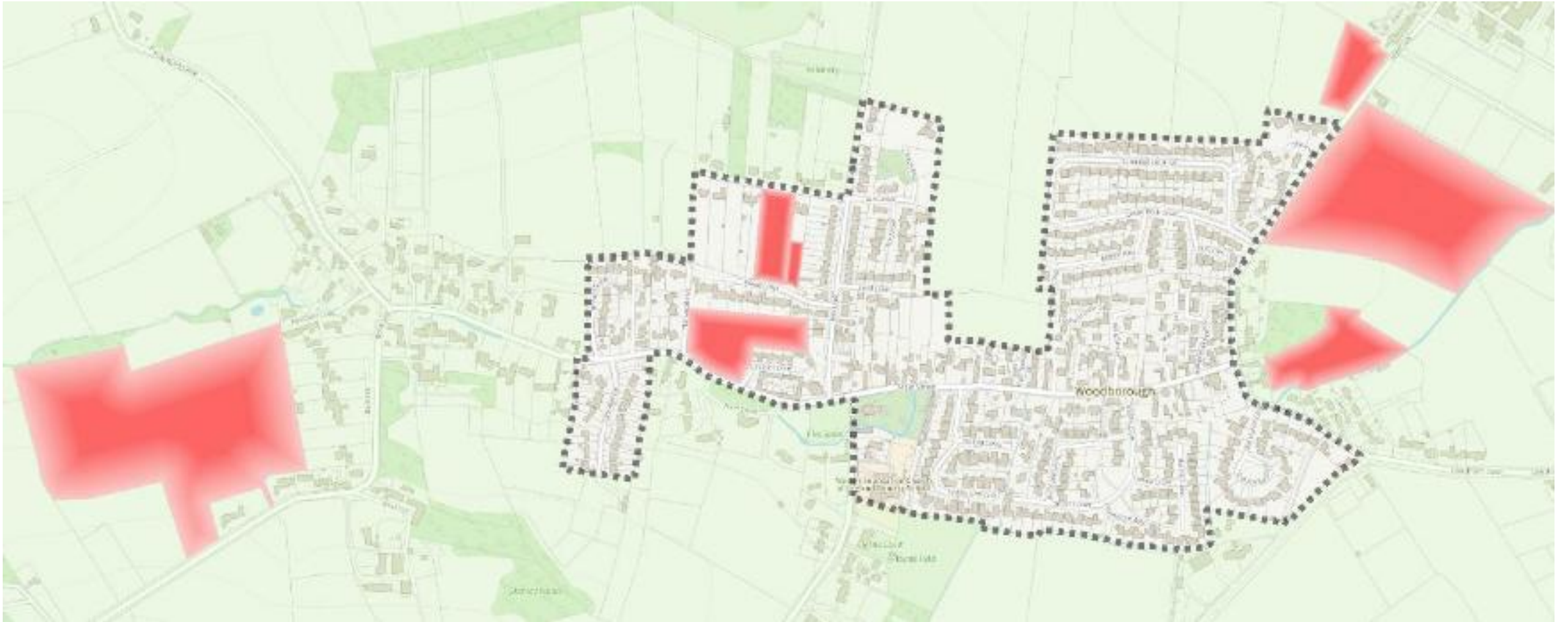
cllr.helen.greensmith@gedling.gov.uk

Gedling Borough

– all potential development areas included in the plan



Woodborough





Consultation

- Can be completed online using link given on leaflet
- Can be completed using hard copy – copies available here
- There are 107 questions – so focus on the ones relevant to Woodborough

Main Questions to respond to

- First Priority - Woodborough specific – HOU 26, HOU 27, HOU 28
- Second Priority – Housing distribution – SS2, SS3, SS4, CC5, CC6 and G&T – MIX 4
- Third Priority – Grey belt – GB 4, GB 6, GB 7 and Green Space – BGI 4
- Fourth Priority – Housing misc. – SS1, HOU 2, MIX 2, MIX 7, DES 2

Woodborough specific

- Question HOU 26 - With reference to the map of Woodborough attached at Appendix A (Plan A13), do you support development to the east, west or in the centre of the settlement?
- Question HOU 27 – Do you have any comments about the impact and opportunities arising from the development in this location?
- Question HOU 28 – Are there any other areas suitable for development that accord with the spatial strategy?

Infrastructure Considerations

- Transport infrastructure (including footpaths, bridleways, cycleways and roads)
- Drainage and flood protection
- Public transport (including services and facilities)
- Travel behavioural change measures (including travel plans, marketing and promotion)
- Affordable housing
- Supported housing
- Education (including early years provision and community education)
- Community facilities (including libraries, youth activities and meeting venues)
- Cultural facilities
- Health and social care facilities
- Emergency services (police/crime reduction measures, fire and ambulance services)
- Environmental improvements
- Waste recycling facilities
- Shopping facilities
- Information and communication technology
- Training and employment measures for local people

Next Steps

- Access the report
- Complete the consultation – whether you respond to 3 questions of all 107 – just respond please
- Updates will be posted on the Parish Council website